

THE PATRIARCHY



AT PLAY.

CONTENTS.



04.

About me

06.

Concept

08.

Mood board

10.

Trend colour

12.

Trend silhouette

14.

Development

16.

Wet moulding

18.

Hero body

20.

Styling



ABOUT

Nicola Mularczyk is a young, emerging womenswear designer from coastal NSW, now based in Melbourne. With an impressive blend of creativity and craftsmanship, Mularczyk has masterfully woven together time-honoured menswear tailoring techniques and exquisitely feminine contours, resulting in a captivating juxtaposition that defines her unique design ethos. In her pursuit of innovation, Mularczyk ingeniously incorporates a myriad of leather manipulation methods, including but not limited to wet moulding, smocking, and pleating. These artistic interventions not only introduce visually stunning elements but also imbue her creations with a rich tactile dimension, elevating her designs to a level of multisensory allure.

The Patriarchy at Play is a womenswear collection that draws inspiration from the empowering legacy of feminist figures throughout history. The collection embraces the essence of power dressing by incorporating traditional menswear fabrications such as wool and leather. Taking innovation to new heights, The Patriarchy at Play explores the art of leather manipulation through techniques like smocking and wet moulding, resulting in captivating 3D textures. By combining the strength and authority of menswear fabrics with these innovative leather manipulations, the collection redefines power dressing for the modern woman.

The ideology behind the collection revolves around the fusion of power dressing, feminist inspiration, and innovative leather manipulations. The collection pays homage to historical feminist icons such as the suffragettes, who tirelessly fought for the women's right to a political opinion and education. Along with more modern day feminists like actress Katharine Hepburn, who defied societal norms with her non conformist attitude and assertive demeanour. Her boldness serves as a catalyst for the designs, infusing them with strength and individuality.

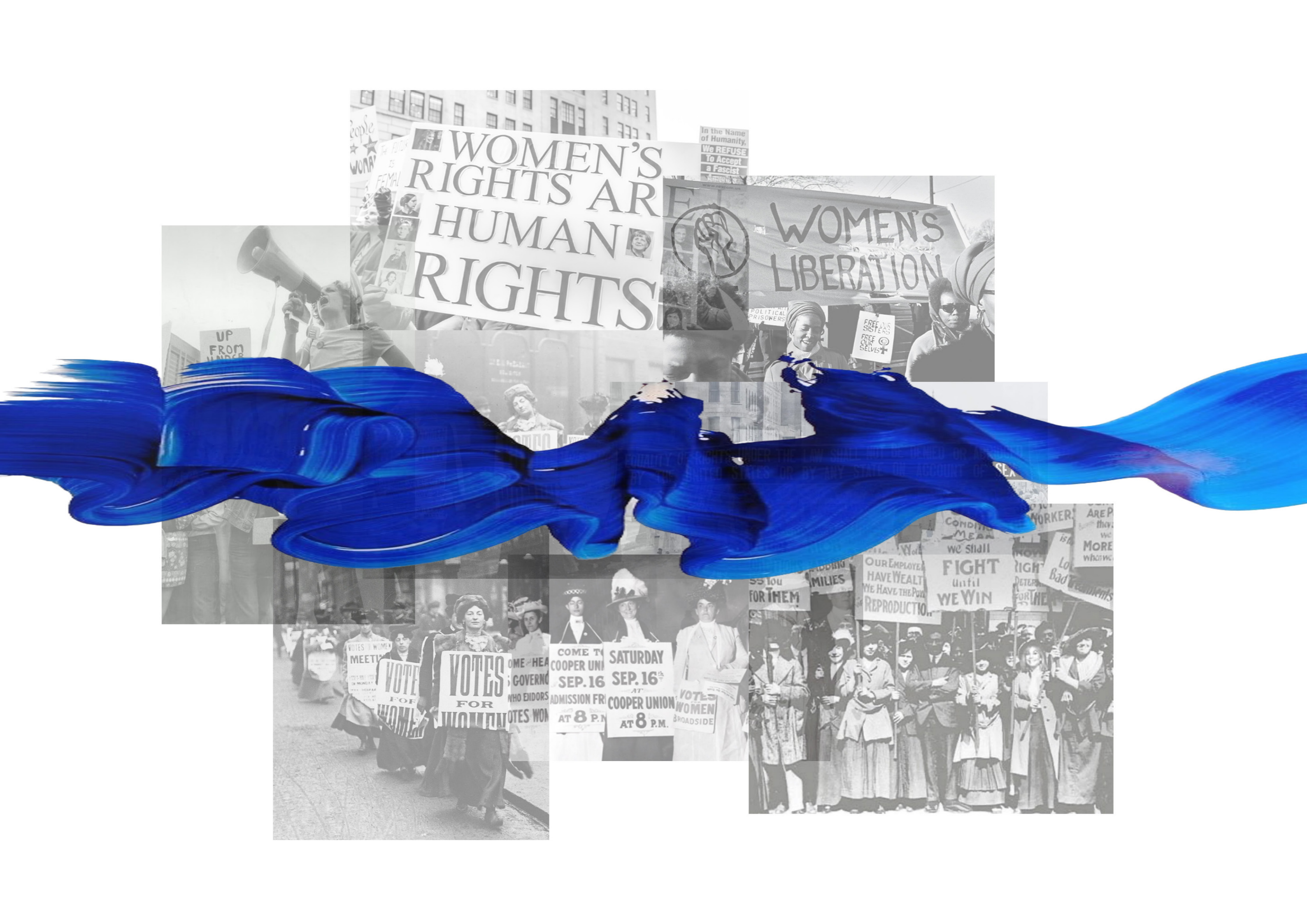
Traditional menswear fabrications take centre stage throughout the collection. Luxurious wool suiting and coating is incorporated into tailored blazers and trousers.

Leather, synonymous with power and confidence, is utilised to create striking accents and structural elements within the collection. The innovation lies in the leather manipulations that breathe new life into power dressing. Smocking, a technique traditionally associated with light weight cottons fabric, is adapted for leather, creating intricate patterns and textures that elevate the garments to new artistic heights. Wet moulding is employed to sculpt the leather into three dimensional shapes, forming visually captivating details that symbolise the strength and dynamism of empowered women. By combining traditional menswear fabrications such as wool and leather with smocking and wet moulding techniques, the collection represents a fusion of strength, femininity, and creativity. The captivating three dimensional textures achieved through leather manipulation serve as a visual representation of the resilience and dynamism of empowered women.

With a sophisticated colour palette, featuring tones of blue, balanced silhouettes, and attention to accessories, the collection provides a platform for women to embrace their power, redefine societal norms and make a lasting impact in both their personal and professional lives. The Patriarchy at Play is a testament to the enduring spirit of feminism, symbolising the relentless pursuit of equality and the boundless potential of empowered women.



CONCEPT.



WOMEN'S RIGHTS ARE HUMAN RIGHTS

In the Name of Humanity, We REFUSE To Accept a Fascist Amendment

WOMEN'S LIBERATION

FREE OUR SISTERS FREE OURSELVES

UP FROM UNDER

POLITICAL PRISONERS

OUR EMPLOYERS HAVE WEALTH WE HAVE THE POWER OF REPRODUCTION

FIGHT until WE WIN

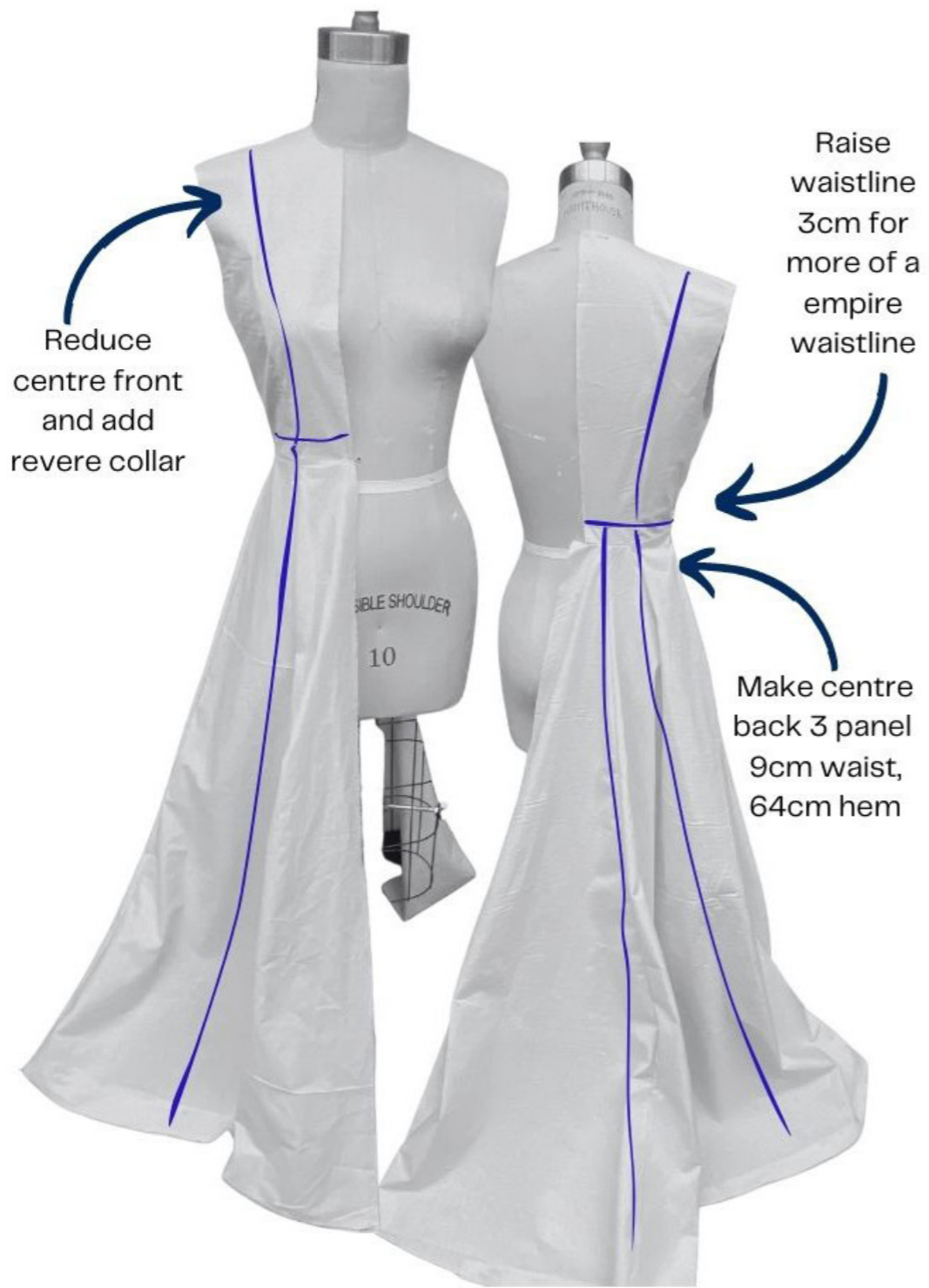
VOTES FOR WOMEN

COME TO COOPER UNION SEP. 16 AT 8 P.M.

SATURDAY SEP. 16th AT 8 P.M. AT COOPER UNION BROADSIDE

VOTES FOR WOMEN

DEVELOPMENT.

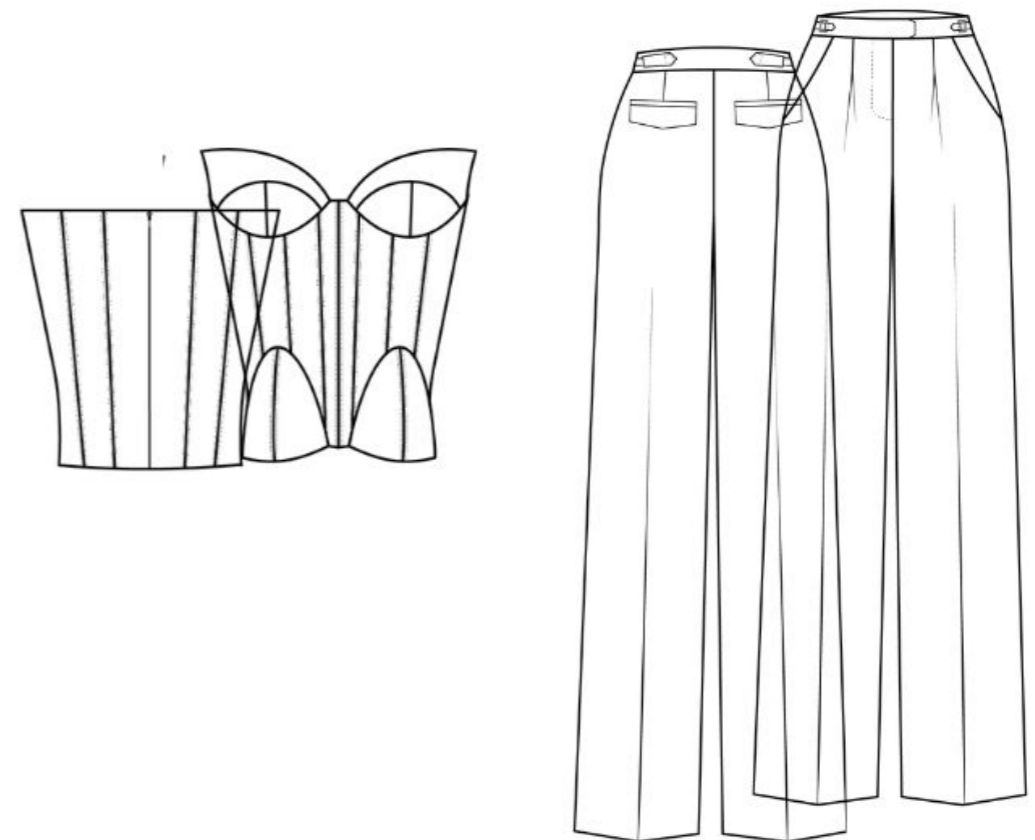




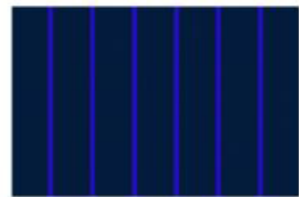
WET MOULDING

Leather manipulation was implemented in the bodice of the evening coat in the form of wet moulding. The selected leather panels were soaked in a softening solution over night. After soaking the leather is patted dry and carefully stretches over a large wire rack. The leather is then pressed and clipped into place and left to dry for 72 hours. Once ready to be removed from the rack the leather is backed onto a cotton fabric to provide stability.

HERO BODY



Custom dyed cobalt
blue leather



Navy/ royal pinstripe
wool suiting



Navy
lambskin leather

STYLING.



